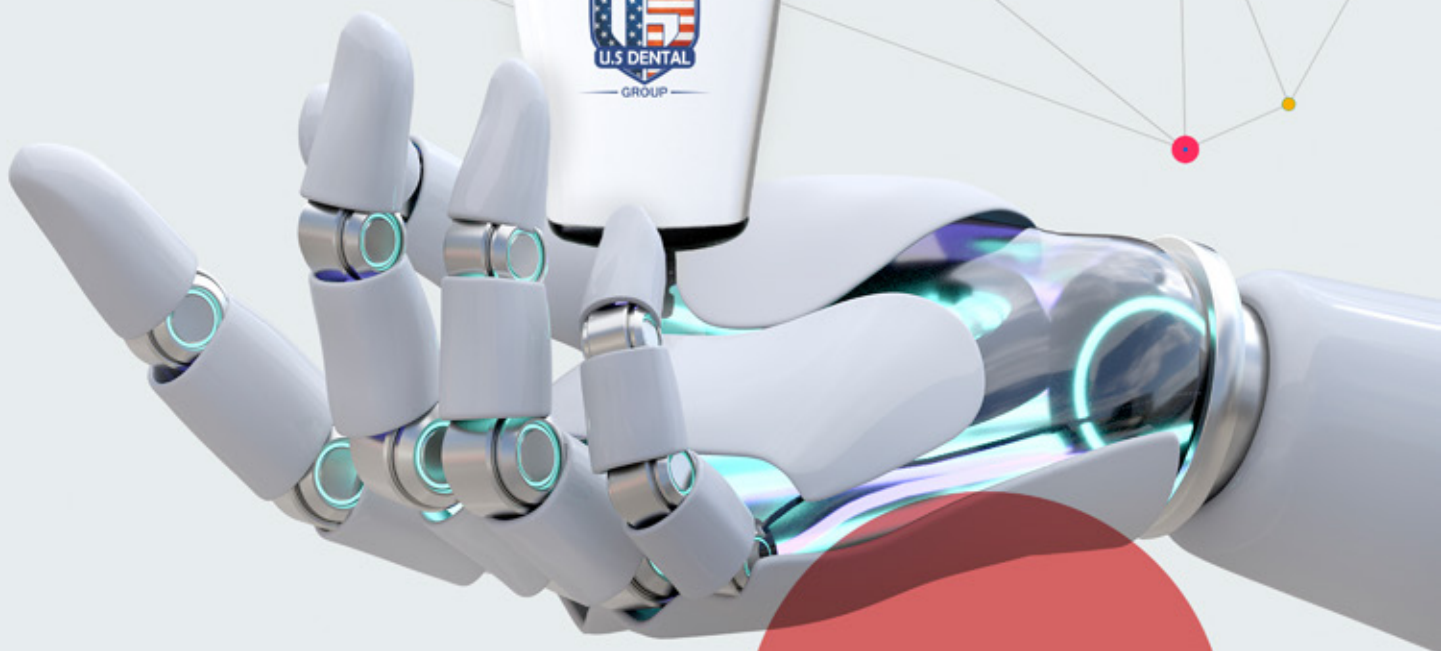




US Dental

Intra Oral Scanner



Product Features



AI Technology, much smarter, improve a lot of scanning experience



3 Different tips, meet more demands of different applications



Much smaller, very easy to operate



Clear margin line, full HD color, high accuracy



Fast scanning speed, easy to learn and use



Powder-free and true color scan

1 Efficient Treatment Experience

- Reproduce the real state of teeth
- Accurate anatomical features
- 3D high-definition color, visual communication
- Easy and exciting treatment experience

2 Accurate Shoulder Margin

- Clear and easy to identify margin lines
- Compatible with CAD software
- Real-time accurate display
- Improve the success rate of visits

3 Convenient Preparation Check

- Shadow detection for better preparation
- Clear occlusion registration check
- Convenient tools for clinics and laboratories
- Adjust and correct production in time

4 Revolutionary Improvement *

- Scanning speed improve 50%
- Handpiece weight decrease 50%
- Data accuracy improve 30%
- Height of tips decrease 14%

*Comparing to the P1 prototype

Application Features

Parameters

1-2 min

Full Arch Scanning

3 types

Different Angle Tips

10 μ m

More Accurate

246 g

Aviation Aluminum

| | |
|-----------------------|--------------------------------|
| Overall Size | 216 x 40 x 36 mm |
| Tips End | 19.6 x 14.6 mm Autoclavable |
| Field of View | 18 x 16 mm |
| Depth of Field | 20 mm |

Patents

40+

Certificates

CE ISO FDA

Interface

USB3.0

Data Output

STL PLY PTY

*encrypted data available

Smaller, Faster

And More Affordable!



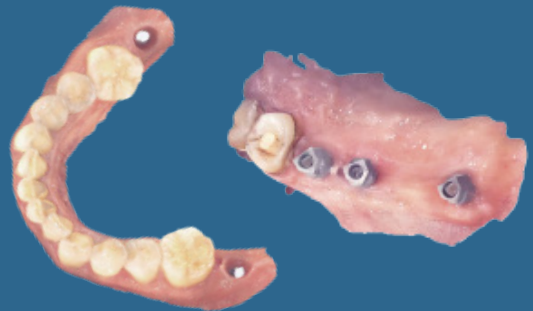
Application

Restoration



Accurate and clear shoulder margin brings efficient design, and high-definition color images help dentists effectively distinguish between gingiva and teeth. One visit, immediate restoration.

Implant



Fast scanning with a large field of view, easily capture 3mm data of cuff, and accurately scan of metal path pin. No need to do repeat impression and improve patient's treatment experience.

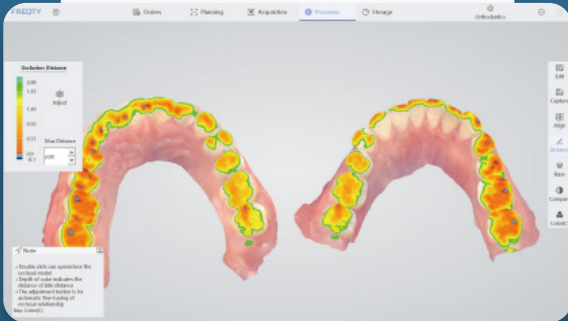
Orthodontics



High accuracy of the full dentition, restore the real state of full arch. Get orthodontic treatment quickly, and save time for more patients.

Application

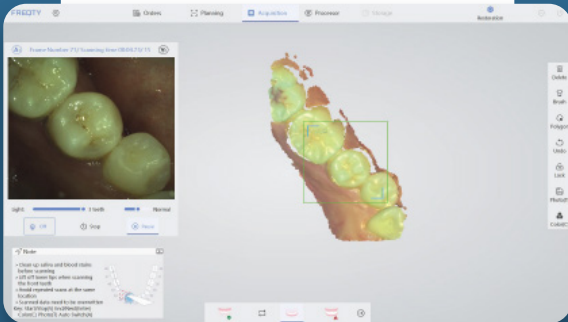
Bite Check



Teeth Measurement



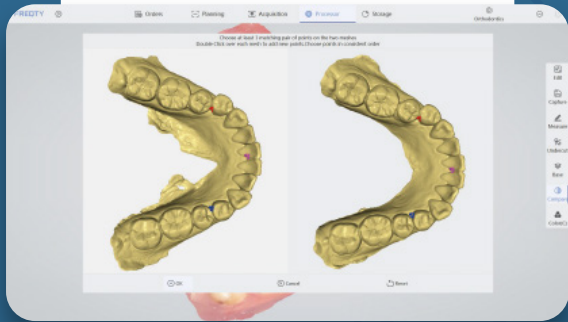
2D Images Store



Margin Line Drawing



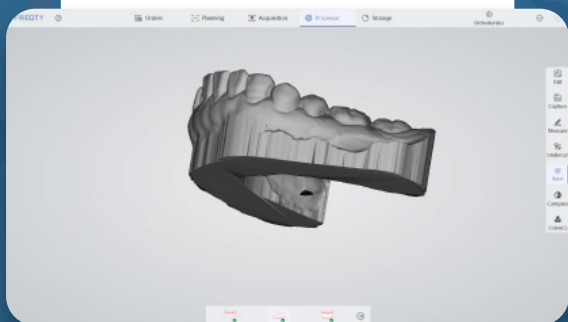
Cases Comparison



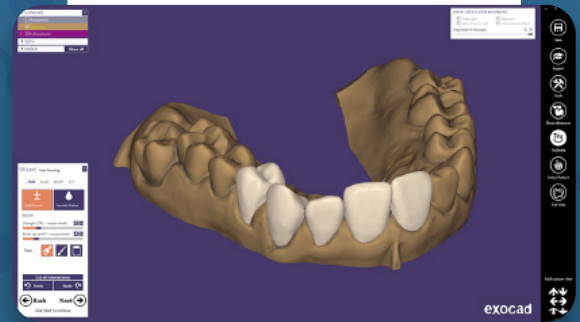
Undercut



Base Adding



Direct Export into Exocad*



Product Information

| | |
|----------------------------|-----------------------------|
| Acquisition Technology | Staring Scan |
| Camera Number | x 3 |
| Scan Field | 18x16mm |
| Scan Depth | 20mm |
| Precision | 5µm |
| Accuracy | 10µm |
| Color | Full HD |
| Anti Fog System | Intelligent Heating |
| Full Jaw Scanning Time | 1-2 min |
| True Color | Yes |
| Handpiece Enclosure | Aviation Aluminum Alloy |
| Handpiece Dimension | 216 x 40 x 36 mm |
| Handpiece Weight | 226g (246g with tip) |
| Tip Types | 3types (N/M/D) |
| Number of Tips included | 5 |
| Autoclave Cycle for Tips | 30-50 times |
| Calibrator | Automatic |
| Scanning Control | Foot Pedal |
| Image Transfer Interface | USB3.0 |
| Cable Lenght (m) | 2m |
| Cart Touchscreen | Optional |
| Power Supply Type | AC/DC Medical Power Adapter |
| Supply Voltage (V) | 100-240V/50-60Hz |
| Supply Current (A) | 0.7-1.5A |
| Storage Temperature (°C) | -10°- 55°C |
| Operating Temperature (°C) | 15°-30°C |

Aftersales

| | |
|-------------------|---------------------|
| Standard Warranty | 1 year |
| Extend Warranty | 2-3 years available |

Regulatory (Documentation & Certification)




| | |
|---------------|----------------------------------------------|
| Certification | CFDA/CE/ISO13485/FDA/ INMETRO/ANVISA, etc |
|---------------|----------------------------------------------|

Software

| | |
|--------------------------------------|-----------------------------------------------|
| Treatment for | Orthodontics, Implant, Restoration, etc |
| Image Store | Yes |
| 3D Data Preview | Yes |
| Output Files | STL, PLY, PTY (encrypted for user) |
| Cloud Service | Yes |
| Cloud Service Price | 5GB/free |
| Direct Compatibility With Dental CAD | Exocad* |
| Main Image Processing Tools | Trim/Edit/Recover/Lock, etc. |
| Margin Line Drawing | Yes |
| Occlusal Matching | Yes |
| UnderCut | Yes |
| Data Comparing | Yes |
| AI Technology | Auto Tissue Remove, Overlapping Correct, etc. |
| Software Licence | Free |
| Software Upgrade | Free |
| API | Available |
| Scanning Feedback | Music |

*All names, logos, brands and other trademarks featured or referred to within this brochure are the property of their respective trademark holders.

PC/Laptop IT Requirements

| | |
|-----------|------------------------------------------------------------------------------------------------------------------------------------------------------------|
| OS |  Windows 10*64 bit |
| CPU |  Intel Core i7-10870H/ Intel Core i7-10875H/ Intel Core i7-11800H |
| GPU |  GTX1660TI/RTX2060/RTX3060 |
| RAM | 16G or 32G |
| ROM | recommend 512G SSD or above |
| Interface | USB 3.0 |